

## EXHIBIT CALENDAR

**Wild Kratts®: Ocean Adventure!  
& Wild Kratts®: Creature Power!®**

January 18—May 11, 2025

**100 Years: A Cornerstone of Our Community**

January 25—June 1, 2025

**Divine Forms & Earthly Delights:  
Reimagining Asian Art**

February 22—August 10, 2025

**Patrick McGrath Muñiz:  
Recolecciones / Recollections**

May 31—August 24, 2025

**Toytopia**

June 14—September 7, 2025

**Her Brush, Her Story:  
Women Watercolorists**

June 21—August 17, 2025

**Family programming in RED**  
**Adult programming in BLUE**  
**Scout and Camp programming in GREEN**

\* = Requires registration/tickets

**For more information and topics/themes,  
visit our website or call the Education  
Department at 610-371-5850 x255.**

### MARCH

**Camp Registration Opens to Members\***

• March 1

**Scout Event with Berks Nature at RPM\***

• March 1 | 9am-3pm

**Yoga Under the Stars\***

• Tuesday Evenings | 5:30pm

Spring Series 2 – March 4 to April 8

**Homeschool Day\***

• March 13 | 10am

**Arboretum Education**

• March 18 | 10am

**Sky Dreams & Night Owls\***

• March 22 | 2-5pm

**Galactic Overnight Adventure\***

• March 22-23 | 6pm-8:30am

**Homeschool Day\***

• March 27 | 10am



Address Service Requested

NON-PROFIT  
ORG.  
U.S. Postage  
**PAID**  
READING, PA  
PERMIT NO. 598

**Senior Series**

• March 28 | 1-3pm

**Universe of Learning Day at The Neag  
Planetarium**

• March 30 | 3-5pm

### APRIL

**Camp Registration Opens to Non-Members\***

• April 1

**Wildlife Wonders\***

• April 5 | 10am-1pm

**Scout Event with Reading Public Museum at  
Berks Nature\***

• April 5 | 1-5pm

**5 Flowers, 4 Stories, 3 Cheers for Animals\***

• April 6 | 9am-12pm

**Homeschool Day\***

• April 10 | 11:30am

**Uncorked Creativity\***

• April 10 | 6-8pm

**Science Saturday\***

• April 12 | 11:30am-1pm

**Arboretum Education**

• April 15 | 10am

**Family Paint & Pizza Party\***

• April 17 | 11am-1pm

**Easter at The Museum**

• April 19 | 9am-1pm

**Homeschool Day\***

• April 24 | 10am

**Senior Series**

• April 25 | 1-2pm

**Yoga Under the Stars\***

• Tuesday Evenings | 5:30pm

Spring Series 3 - April 29 to June 3

Looking ahead: Save these dates in 2025 to attend our most popular annual events and programs!

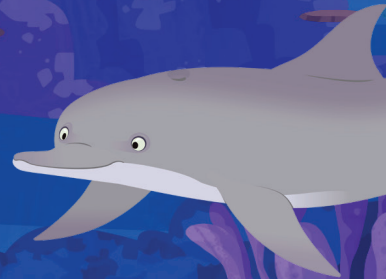
Dogs and Brews 5/25 • Night at the Museum 9/25

For details on events and updates to the calendar, visit: [readingpublicmuseum.org](http://readingpublicmuseum.org)

# MUSEUM ROAD

WINTER 2025

A publication of The Reading Public Museum • Neag Planetarium • Arboretum



## INSIDE THIS ISSUE:

- Wild Kratts®
- 100 Years of RPM
- Reimagining Asian Art

READING  
PUBLIC  
MUSEUM

# Wild Kratts®: Creature Power®! and Wild Kratts®: Ocean Adventure!

January 18 – May 5, 2025



animal and sea life habitats and the creatures within them.

“We’re thrilled to bring these two exhibitions to Reading,” says Mary Johnson, Manager of STEM Education at RPM. “These interactive exhibits perfectly complement our mission of sparking a curiosity for science in young minds.”

These adventurous exhibits, which focus on cultivating STEM skills in children ages 3 to 9, invite kids and families to explore animal habitats from around the globe, discover incredible creature powers, and go on a mission to foil the villains’ nefarious plans.

“These exhibits will get kids moving and thinking while they explore important concepts in science and the natural world,” said Chris Kratt, executive producer of Wild Kratts and co-founder of The Kratt Brothers Company.

In *Wild Kratts®: Creature Power®!*, visitors will explore four animal habitats including the Tropical Rainforest, the Antarctic, the Australian Outback Desert, and their very own neighborhood! Kids and families will get the chance to learn about and try out various Creature Powers®, such as sneaking through the forest using the stealth of a jaguar, swinging through the trees like a spider monkey, testing their hops against a kangaroo, and much more!



*Wild Kratts®: Creature Power®!* and *Wild Kratts®: Ocean Adventure*, two interactive exhibits based on the popular PBS Kids series, are now on display at the Reading Public Museum. In these engaging exhibits kids and families will explore

In *Wild Kratts®: Ocean Adventure*, visitors can explore the seashore, investigating and miniaturizing in a tidal pool, crawling through an anemone, and hunting for lunch like a lobster. In a section called "The Shallow Seas", visitors can create their own dolphin name and work at a shark cleaning station. In "The Deep Sea", families can explore hydrothermal vents and a bioluminescent grotto, steer an Amphisub through the ocean depths in search of rarely seen creatures of the ocean floor, and experience a deep sea showdown between a sperm whale and a colossal squid!



## About Kratt Brothers Company

Kratt Brothers Company, founded in 1993, has created and produced more than 275 episodes of television, including award-winning series: Kratts’ Creatures, Zoboombafoo with the Kratt Brothers, Kratt Bros. Be the Creature, and Wild Kratts. Through its full-service animation studio, The Kratt Brothers Company is currently in production on its sixth season of the Emmy-nominated hit, Wild Kratts. [www.krattbrothers.com](http://www.krattbrothers.com)

*Wild Kratts®: Creature Power®!* and *Wild Kratts®: Ocean Adventure!* were created by Minnesota Children’s Museum and The Kratt Brothers Company. Wild Kratts® © 2024 Kratt Brothers Company Ltd. / 9 Story Media Group Inc. Wild Kratts®: Creature Power® and Ocean Adventure and associated characters, trademarks, and design elements are owned by Kratt Brothers Company Ltd. Licensed by Kratt Brothers Company Ltd. All Rights Reserved.

Sponsored locally by:

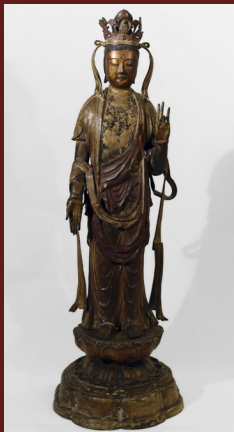


**The Neag  
Foundation**



## Divine Forms & Earthly Delights: Reimagining Asian Art

February 22 - August 10, 2025



Standing Guanyin, Chinese, 14<sup>th</sup> Century or earlier, bronze with polychrome gilding, 38¾ x 14 inches, Museum Purchase, 1929.250.1.

The Reading Public Museum will display an installation of Asian objects, titled *Divine Forms & Earthly Delights: Reimagining Asian Art*, in our World Cultures Gallery this February. With a focus on a group of exceptional works of art from Asia drawn from the permanent collection, the gallery will feature close to one hundred works including paintings, sculptures, ritual objects, ceramics, manuscripts, carvings, metalwork, and decorative arts.

Collecting Asian objects has been part of The Museum's history since its earliest days. This gallery will present examples of the wide range of themes, materials, and historical periods from China, Japan, Thailand, and Tibet. RPM's collection of Asian objects spans more than 2,500 years and includes a group of twelve Japanese temple guardian figures from the sixteenth century, a rare ritual jade cup with poetic inscription from the reign of Emperor Qianlong (1711-1799), a group of Tang and Han Dynasty tomb figures, a stunning standing Chinese bodhisattva Guanyin from the fourteenth century, and a group of elaborately carved Chinese rhinoceros horn libation cups.

The installation is made possible, in part, by a generous grant from the E. Rhodes and Leona B. Carpenter Foundation.

## 100 Years: A Cornerstone of Our Community

January 25 - June 1, 2025

This year marks the 100<sup>th</sup> anniversary of the laying of the current Museum building's cornerstone. The exhibition includes an engaging selection of rarely seen historic photographs, publications, and objects from The Museum archives and collections. Additional works are on loan from Dr. Ivan Bub.



In May of 1925, the cornerstone of our current building was laid, capping more than two decades of expansion and growth that required a bigger structure. The Museum had its beginnings in 1904, when Levi W. Mengel was given permission to purchase exhibits from the St. Louis World's Fair. These, added to Mengel's own natural history specimens and historic artifacts, formed the nucleus of the early museum collection.

The Museum's first home was a Reading School District Administration Building located at Eighth and Washington Streets where it occupied the second and third floors of the building. At first, The Museum's purpose was exclusively to educate school children, but the founder quickly realized that the collections could become a resource and attraction for the broader community. It opened to the general public in 1913 and, about ten years later, the decision was made to undertake the project of a purpose-built museum at a new location.

There was much debate about the location of the new museum until Irvin Impink and Ferdinand Thun made an offer of a parcel of land in the 18<sup>th</sup> Ward, adjacent to the Wyomissing Park neighborhood. Ground was broken in February of 1925, and the dedication ceremony was held three years later in 1928. The doors opened with much fanfare as The Museum took center stage among Reading's most important cultural resources. 100 years later, the Reading Public Museum is as vibrant and relevant as ever, offering school tours, family and adult programs and an array of engaging temporary and permanent exhibits for visitors from Berks County and beyond.



## Host Your Next Event at the Reading Public Museum: Voted Berks County's Top Venue Choice for Eight Consecutive Years

Planning a wedding, corporate event, or celebration? From stargazing in the Planetarium to stunning Galleries or the garden-inspired Stone Terrace Tent, the Museum's award-winning venues offer unforgettable settings for any occasion.

When it comes to hosting memorable events, The Museum is a venue like no other. Voted *Berks County Living's* "Best of Berks" for eight years running, The Museum offers three distinct event spaces that provide elegance, versatility, and an unforgettable experience.



### **The Neag Planetarium**

Perfect for conferences, galas, or intimate gatherings, the Planetarium transforms events with stunning starlit projections. Our state-of-the-art dome offers custom sky displays, creating a mesmerizing and unforgettable experience.

### **Museum Galleries**

For an artful twist, the Museum Galleries provide an elegant setting surrounded by history, culture, and art. Perfect for receptions or corporate gatherings, guests can explore world-class exhibits in a dynamic and inspiring atmosphere.

### **Stone Terrace Tent and Gardens**

Ideal for outdoor spring and summer events. Nestled in our 25-acre arboretum, these spots offer a scenic setting for weddings, anniversaries, or corporate mixers, the terrace and gardens are a beautiful backdrop for mingling and photos.

To reserve your date or for more information, contact Kara Seawell at 610.371.5850 x234 or email [kara.seawell@readingpublicmuseum.org](mailto:kara.seawell@readingpublicmuseum.org).



# WINTER 2025 EDUCATION CALENDAR

## Adult Programming

### Arboretum Education | 10am

Join us for a variety of learning opportunities presented by Master Gardeners, avid horticulturists, and other industry specialists.

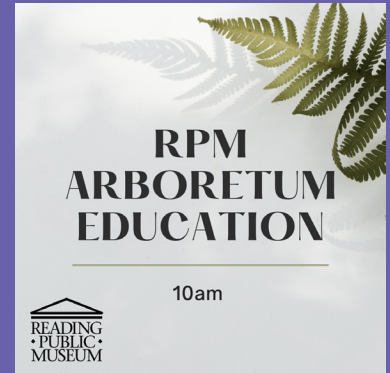
- **March 18 | Terrariums - presented by Master Gardeners**
- **April 15 | Soil Composting & Fertilizer - presented by Master Gardeners**

Contact Rebeka for questions at [rebeka.birch@readingpublicmuseum.org](mailto:rebeka.birch@readingpublicmuseum.org).

#### Pricing:

Museum Members - FREE

Non-Members - FREE with paid Museum Admission



Interested in volunteering with the Arboretum? Contact Rebeka for details!

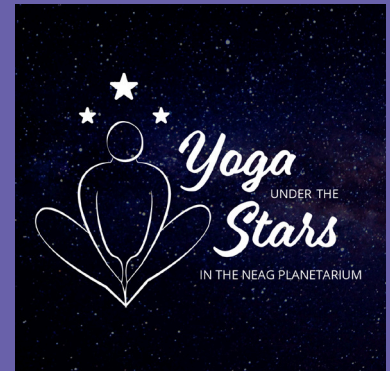
### Yoga Under the Stars

Tuesday Evenings | 5:30-6:30pm

Led by a certified instructor, these yoga sessions in the Neag Planetarium provide gentle yoga relaxation under the stars.

- **Spring Series 2 - March 4 – April 8**
- **Spring Series 3 - April 29 – June 3**

Registration is required. Email Wendy at [wendy.koller@readingpublicmuseum.org](mailto:wendy.koller@readingpublicmuseum.org) to reserve your spot.



#### Yoga Pricing:

Effective for registrations after January 1, 2025	Museum Member	Non-Member
Single Series	\$35	\$55
2 series	\$60	\$100
Drop-In Single Class Price	\$8 per class	\$10/class

# Family Programming



## Pictures with the Easter Bunny

April 19 | 9-11am

The Reading Public Museum will open its doors early on Saturday, April 19, for guests to hop on down the bunny trail! Zerbe Photography will be taking photos of guests with the Easter Bunny. Wander through the rest of the Museum to visit our craft stations and complete an Easter Egg Scavenger Hunt for a chance to win a prize. All crafts are available while supplies last.

Pre-registrations are required to guarantee a photo with the Easter Bunny. Please visit our website to register.

### Pricing:

Museum Members - \$3 per child (all ages), adults free

Non-Members - \$5 per person

RSD families - \$3 per child (all ages), adults free

# Scout and Camp Programming

## Scheduled Girl Scout Programs

- March 22 – Sky Dreams & Night Owls | 2-5pm
- March 22-23 – Galactic Overnight Adventure | 6pm-8:30am
- April 5 – Wildlife Wonders Workshop | 10am-1pm
- April 6 – 5 Flowers, 4 Stories, 3 Cheers for Animals | 9am-12pm

In addition to the scheduled workshops & overnights listed above, we also offer an extensive selection of private scout programs. See website for additional details and registration or contact Rebeka at [rebeka.birch@readingpublicmuseum.org](mailto:rebeka.birch@readingpublicmuseum.org).



# Museum Discovery Camp 2025

Keep your child learning while having fun this summer! Museum Discovery Camp is for children entering grades 1 – 5 in the fall of 2025. Camp days are from 9am – 4pm.

June 9 - June 13: Paws, Prints, & Powers: The Ultimate Animal Adventure

June 16 - June 20: Where in the World is Dr. Levi Mengel?

June 23 - June 27: Our Magic Planet: Exploring the Wonders of Earth

July 7 - July 11: Toytopia: FUN-geneering at Its Finest!

July 14 - July 18: Tides & Traditions: Artistic Journey in Asia and the Pacific

July 21 - July 25: Wilderness Wonders: Nature Awaits!

July 28 - August 1: Beyond the Canvas: Science, Art, & Illusion Unite!

August 4 - August 8: The Mad Scientist Lab

August 11 - August 15: Falling for Fall: Exploring the Season of Change

August 18 - August 22: Design Masters: Crafting the Future

## Pricing:

Member Early Bird: March 1 – April 30 \$165.00/week/camper

Non-Member Early Bird: April 1 – April 30 \$240.00/week/camper

Member Regular: May 1 – Close \$200.00/week/camper

Non-Member Regular: May 1 – Close \$275.00/week/camper

RSD: March 1 – Close \$165/week/camper

**\*All campers must be pre-registered. Registration closes the Monday prior to the start of the camp week.**

**All monies and completed forms must be submitted by that time or registration cannot be guaranteed.**

**\*Contact Rebeka Birch for details or to register at [rebeka.birch@readingpublicmuseum.org](mailto:rebeka.birch@readingpublicmuseum.org).**

**Camp registration is not guaranteed until payment and confirmation are received.**







## David Thun, Museum Friend and Patron (1937 — 2024)

The Reading Public Museum mourns the loss of friend and supporter, David Thun, who passed away on October 31, 2024 at the age of 87.

The Museum was an essential part of David's upbringing, as the grandson of Ferdinand Thun (1866 — 1949). Ferdinand was the co-founder of Wyomissing Industries along with Henry Janssen and Gustav Oberlaender, and an early supporter of The Museum at its current location. The generosity of the Thun family has spanned generations.

David could regularly be found at RPM attending special events and spearheading projects related to the Neag Planetarium, Arboretum and Museum with his wife, Barbara, by his side. His great support of The Museum as a Da Vinci Society member and by way of corporate sponsorships through Magnatech International made a difference at, allowing RPM to pursue its mission in Berks County.

Throughout his life, David made a significant impact on our community. He served on countless advisory committees and boards, including the Schuylkill River Greenways, the Reading Hospital, and the Berks County Community Foundation, to name a few. David's presence at The Museum and in the community will be greatly missed by many.

## Letter from the Director

The Museum is excited to present the *Wild Kratts®: Ocean Adventure & Wild Kratts®: Creature Power®* exhibitions based on the popular PBS Kids series. Families are going to love the interactive elements that are featured in these shows. In our Works on Paper Gallery is the exhibition *100 Years: A Cornerstone of our Community*, featuring historic images of The Museum and the first 100 years since the laying of our cornerstone. The archive of images we have been able to select from, reveal a lot about the first century in our elegant building and lovely park-like setting.



Geoffrey K. Fleming

Open now is the superb new exhibition based on our exceptionally fine Asian object collection, *Divine Forms & Earthly Delights: Reimagining Asian Art*. This particular area of the collection is rich in exquisitely crafted works from several different periods of history and from many diverse cultures across Asia. This area of our collection was one of the first to grow substantially during the 1920s, as several local donors not only gave their collections to The Museum, but we also traveled to New York City to purchase items at auction. I think you will really enjoy the variety of objects chosen for this new exhibit as we celebrate the arts of Asia. We are enormously proud to have the E. Rhodes and Leona B. Carpenter Foundation as the primary sponsor of this exhibition.

See you at The Museum soon!

Geoffrey K. Fleming

# In the Neag Planetarium

## Sunday Shows January-March

- 1pm - *Jack Frost and the Skies of Winter* (Great for families!)
- 2pm - *Legends of the Night Sky: Orion* (Great for families!)
- 3pm - *Jack Frost and the Skies of Winter* (Great for families!)
- 4pm - *One Sky Project*

## Weekday Shows January-March

- 2pm - *Legends of the Night Sky: Orion* (Great for families!)
- 3pm - *Jack Frost and the Skies of Winter* (Great for families!)
- 4pm - *One Sky Project*

## Floyd Final Fridays:

3/28

- 7pm - *Pink Floyd: Wish You Were Here*
- 8pm - *Pink Floyd: Dark Side of the Moon*
- 9pm - *Pink Floyd: The Wall*



**What's new at The Museum?** Easily bookmark our website using the upper right hand corner on your browser for quick access to The Museum's website and stay up-to-date on any pop-up programs or event changes.

**Visit:** [readingpublicmuseum.org](http://readingpublicmuseum.org)

### Join Your Museum Today!

The Reading Public Museum is dynamic and ever-changing, offering diverse exhibitions all year long! Temporary exhibitions featuring science and art combine with our permanent galleries to offer you an engaging experience every time you visit. As a Member, every visit to The Museum and Neag Planetarium is FREE! Plus, there are even more benefits.

Please visit [readingpublicmuseum.org](http://readingpublicmuseum.org) and click on "Join and Support" for complete details and to join securely online.

### The Museum Shop

Looking for a unique gift? You'll find handmade gifts, toys and games for children, exquisite jewelry, and more. Our stock is always changing, so stop in often to see our new items! Open during regular Museum hours (no admission required). Members receive 10% off every day!

### Book a Group Visit

We're thrilled to welcome eager and attentive learners from Pre-K to Seniors on a daily basis. Group rates apply to 10 or more people. For more information or to book a group, contact [wendy.koller@readingpublicmuseum.org](mailto:wendy.koller@readingpublicmuseum.org).

### Book Your Event

The Museum is home to Berks County's most treasured and distinctive wedding and event venues. Among our Fine Art Galleries, Neag Planetarium, and Stone Terrace Tent, we have a venue to accommodate every size and budget. For more information, please contact [kara.seawell@readingpublicmuseum.org](mailto:kara.seawell@readingpublicmuseum.org).

### Museum Address/Phone

500 Museum Rd., Reading, PA 19611  
610.371.5850

### Museum Hours

Daily: 11am to 5pm  
For Holiday hours, please check our website.

### Museum Admission

\$10 Adult (18-64); \$6 Seniors/Children/College Students (w/ID); Members and Children 3 and under are free.

### Planetarium Hours

Sun 1, 2, 3, & 4pm plus Weekday Shows at 2, 3, & 4pm (Mon-Fri with some exceptions).

Star Show prices (for each show):  
\$8 Adults (18-64); \$6 Seniors/Children/College Students (w/ID); Members and Children 3 and under are free. Buy tickets at the Museum admission desk.